



DIWA
— HOMES —

JASPER

GRANDE PEDDAM

TAMUDKI VADO

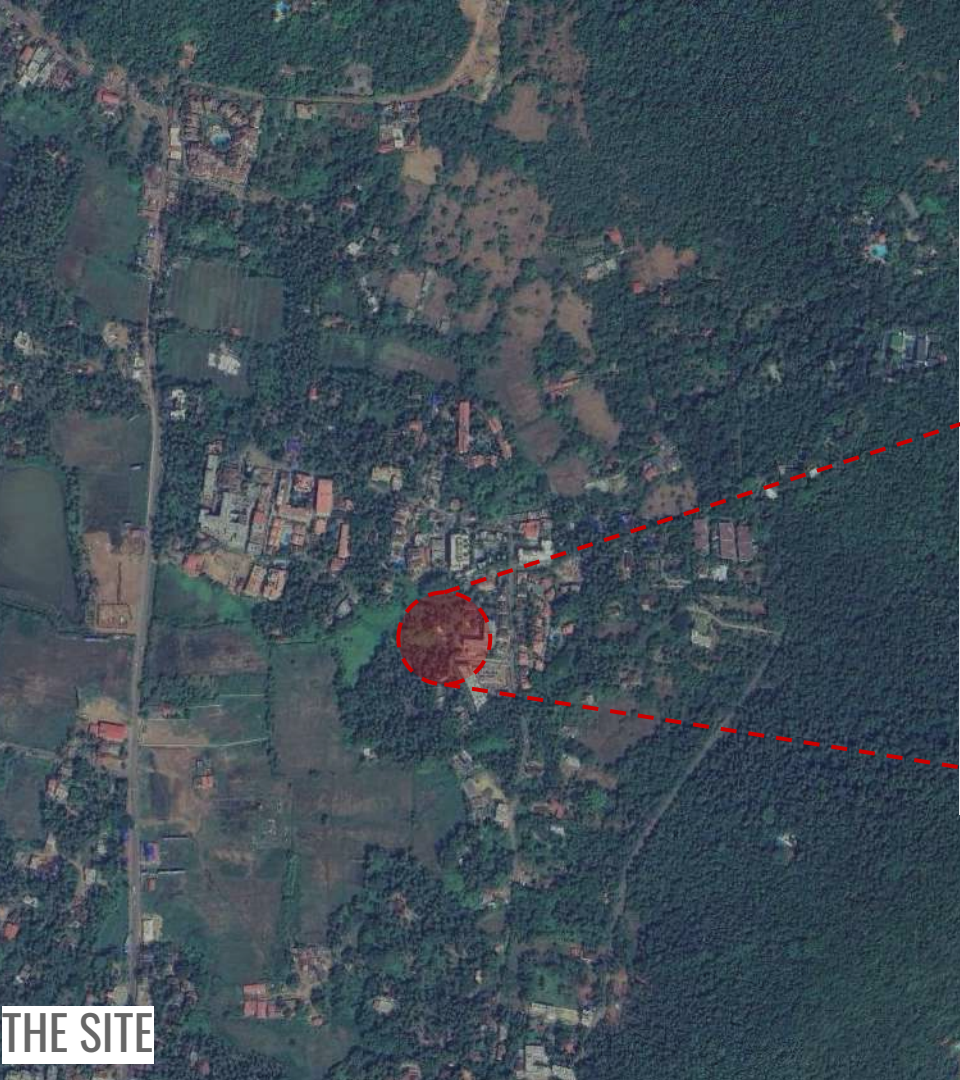
BAGA BEACH



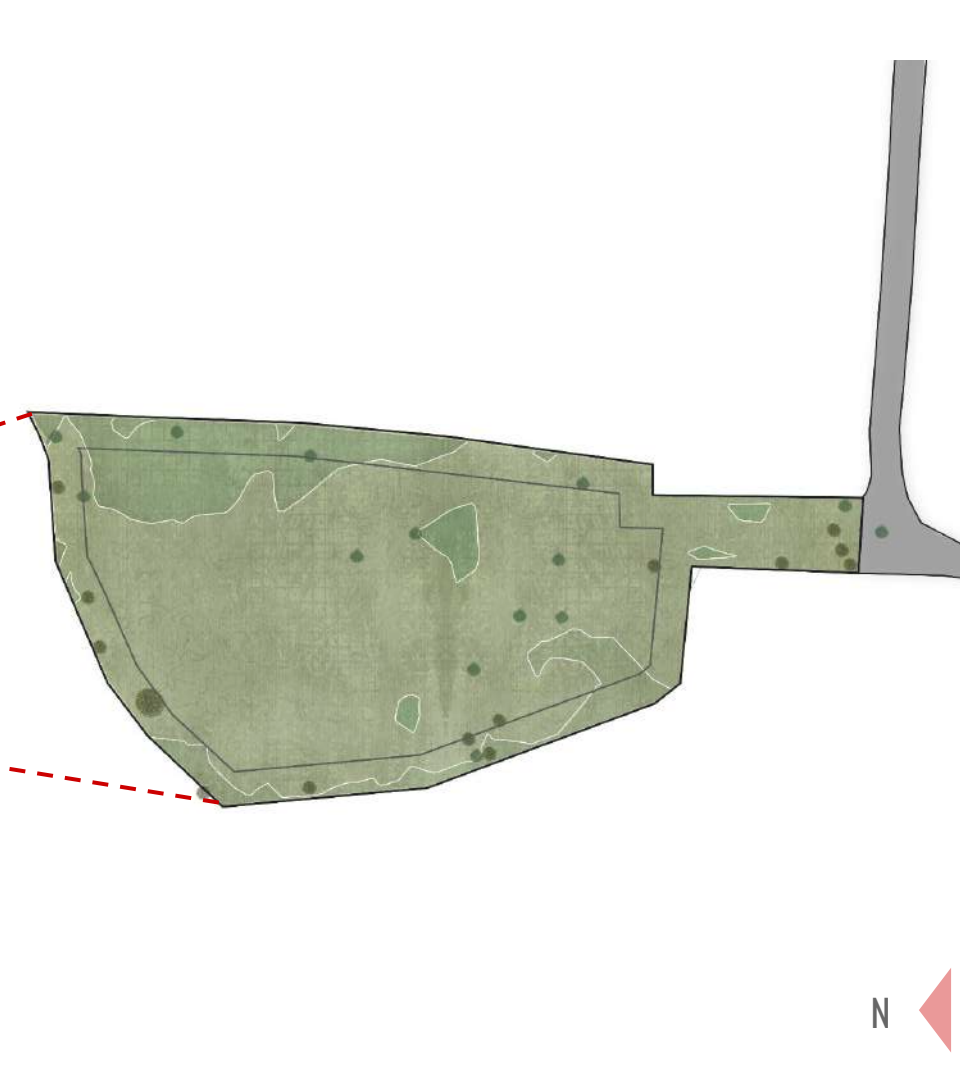
SITE

MAINA BHATTI

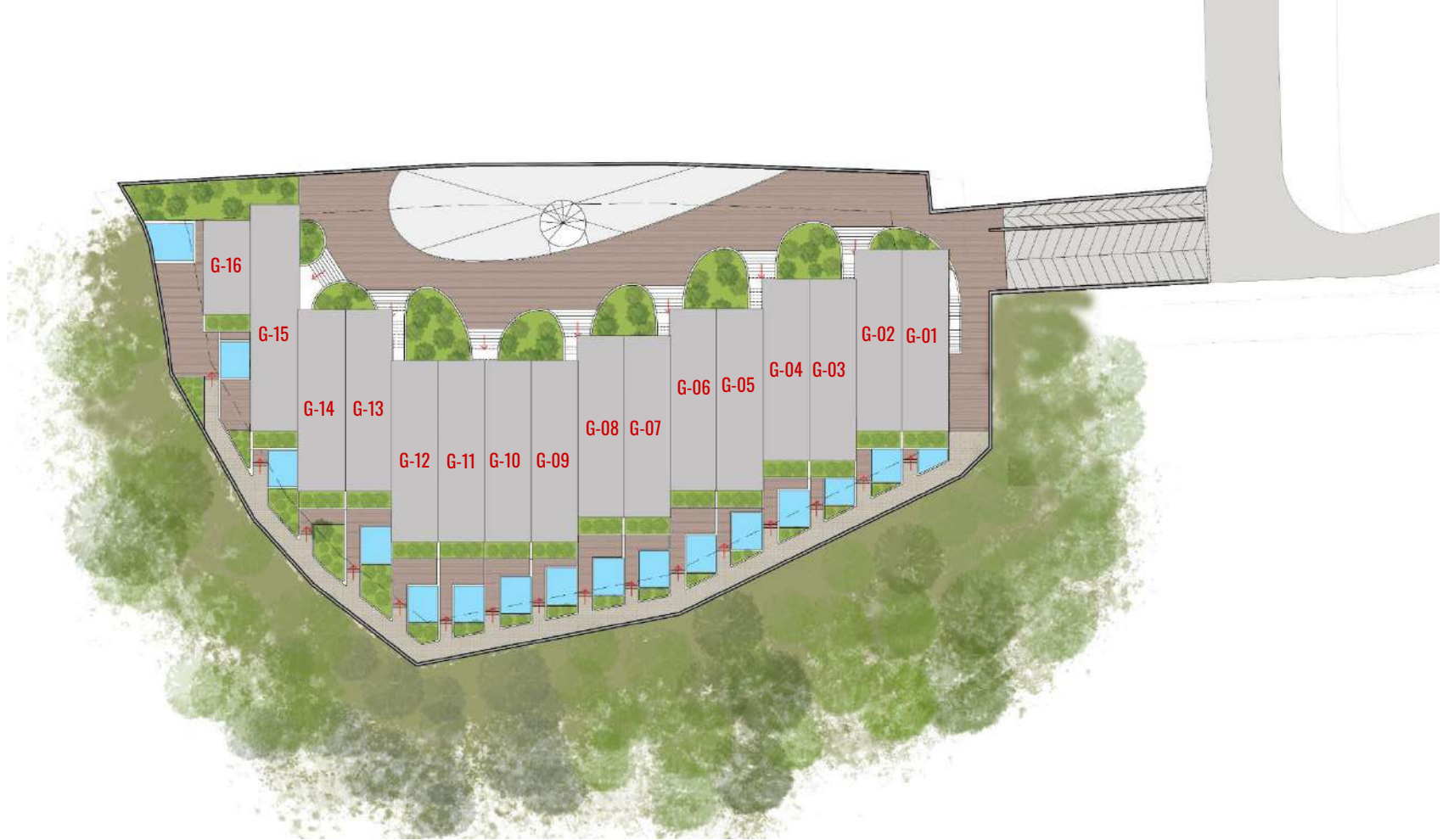
LOCATION AND CONTEXT



THE SITE



N



SITE PLAN

SITE AREA: 27,362 SQ.FT





GROUND FLOOR PLAN





FIRST FLOOR PLAN





SECOND FLOOR PLAN



VILLA PLANS

1 BHK VILLA

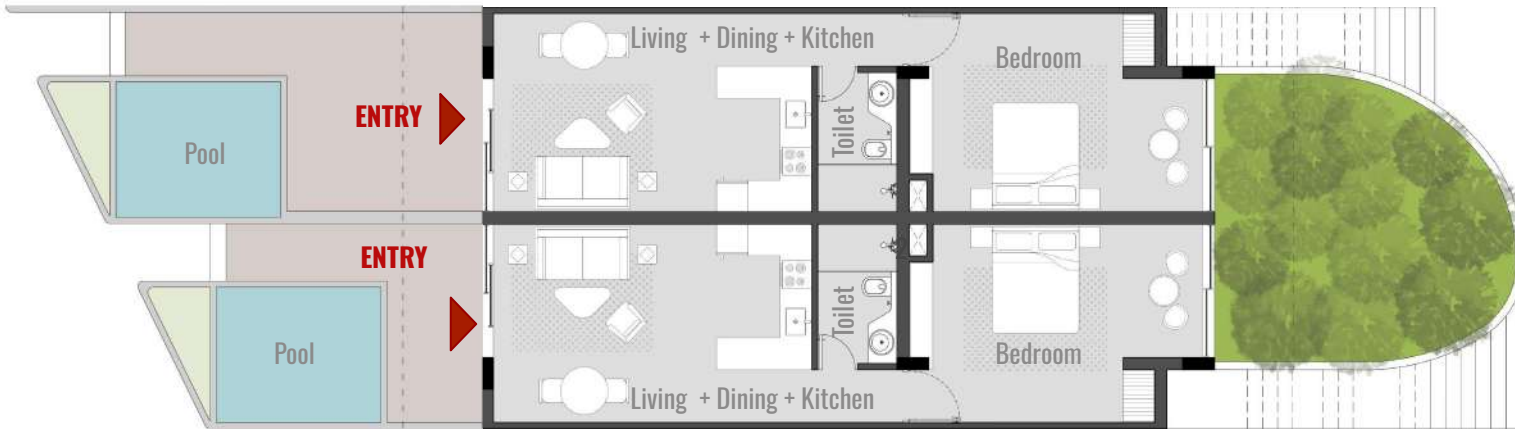
KEY + AREAS :

Living + Dining + Kitchen= 19'9" x 12'4"

Toilet= 5' x 8'8"

Bedroom= 18'3" x 12'4"

Pool= 10'2" x 8'4"



KEY PLAN

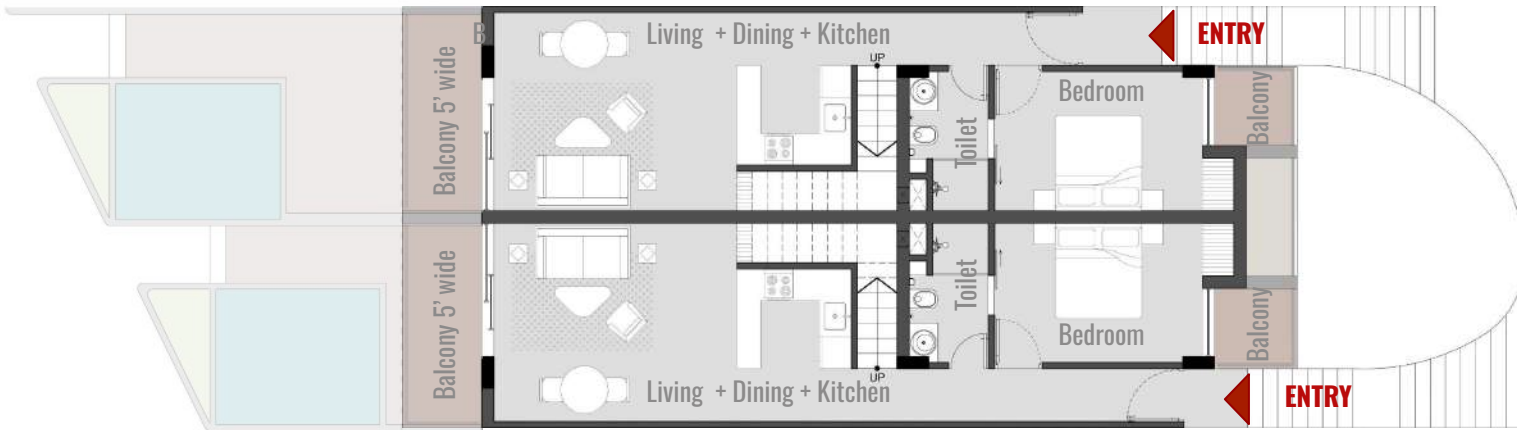
**1 BHK VILLA
GROUND FLOOR (G-01 - G-13)**

KEY + AREAS :

Living + Dining + Kitchen= 22'3" x 12'4"

Toilet= 5' x 8'8"

Bedroom= 13' x 8'8"

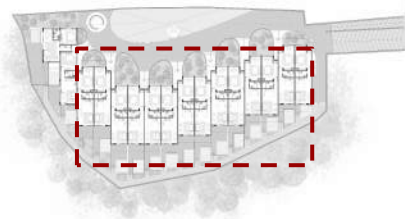
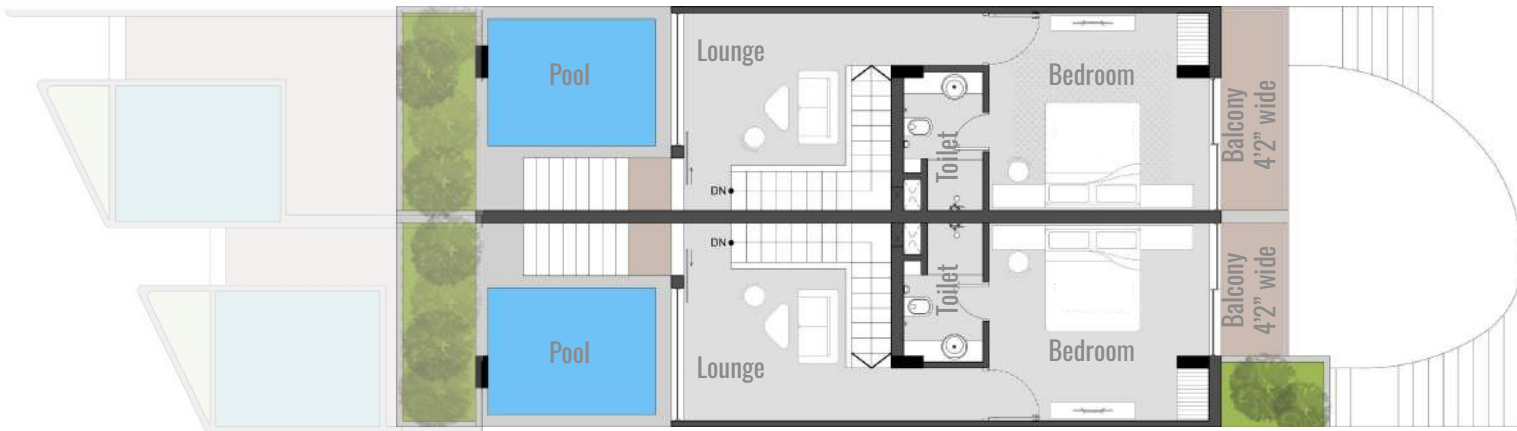


KEY PLAN

**2 BHK VILLA (DUPLEX)
FIRST FLOOR (F-01 - F-13)**

KEY + AREAS :

Lounge= 13' x 12'4"
Toilet= 5' x 8'8"
Bedroom= 13'8" x 12'4"

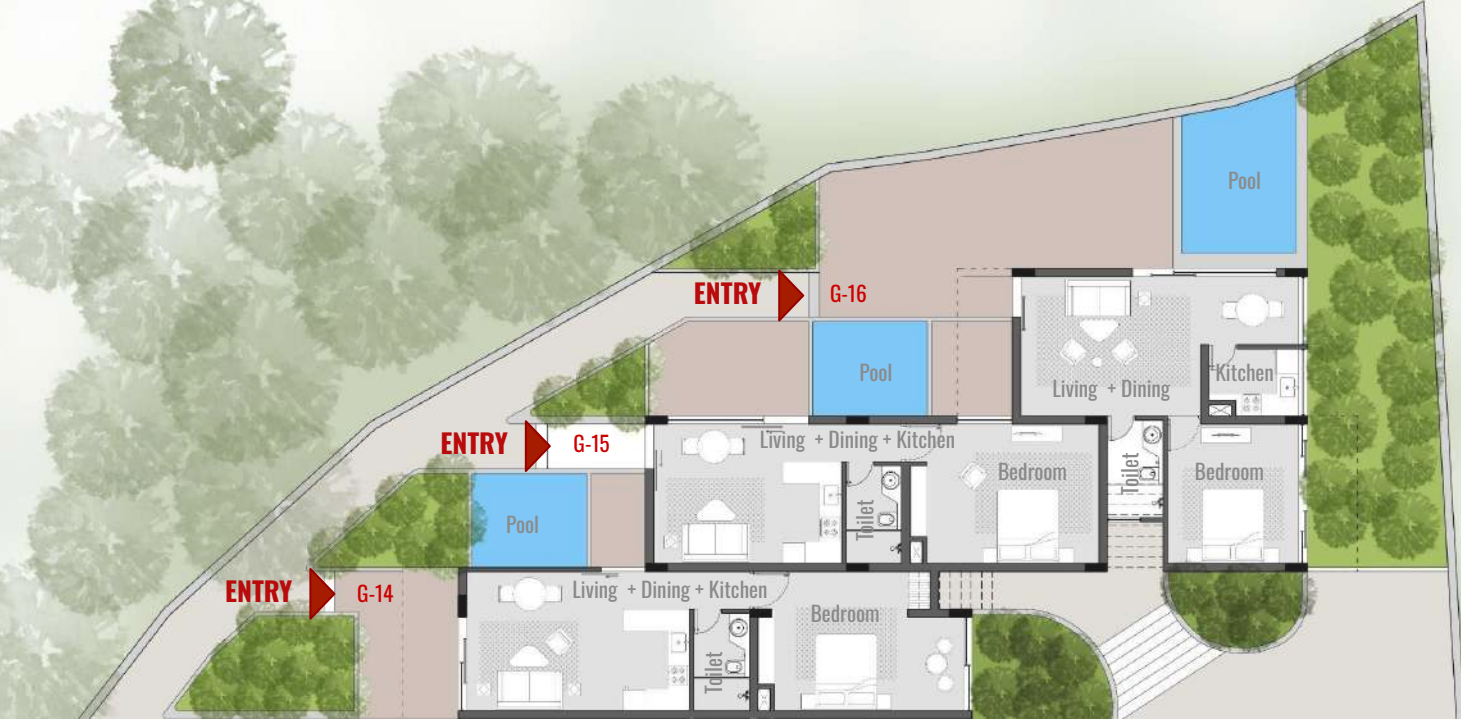


KEY PLAN

**2 BHK VILLA (DUPLEX)
SECOND FLOOR (F-01 - F-13)**

VILLA PLANS

2 BHK DUPLEX VILLA



KEY + AREAS :

G-14

Living + Dining + Kitchen= 19'9" x 12'4"
 Toilet= 5' x 8'8"
 Bedroom= 18'3" x 12'4"
 Pool= 10'2" x 15'

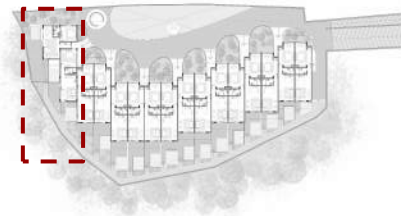
G-15

Living Dining + Kitchen= 16'8" x 12'4"
 Toilet= 5' x 8'8"
 Bedroom= 16'9" x 12'4"
 Pool= 10'2" x 8'4"

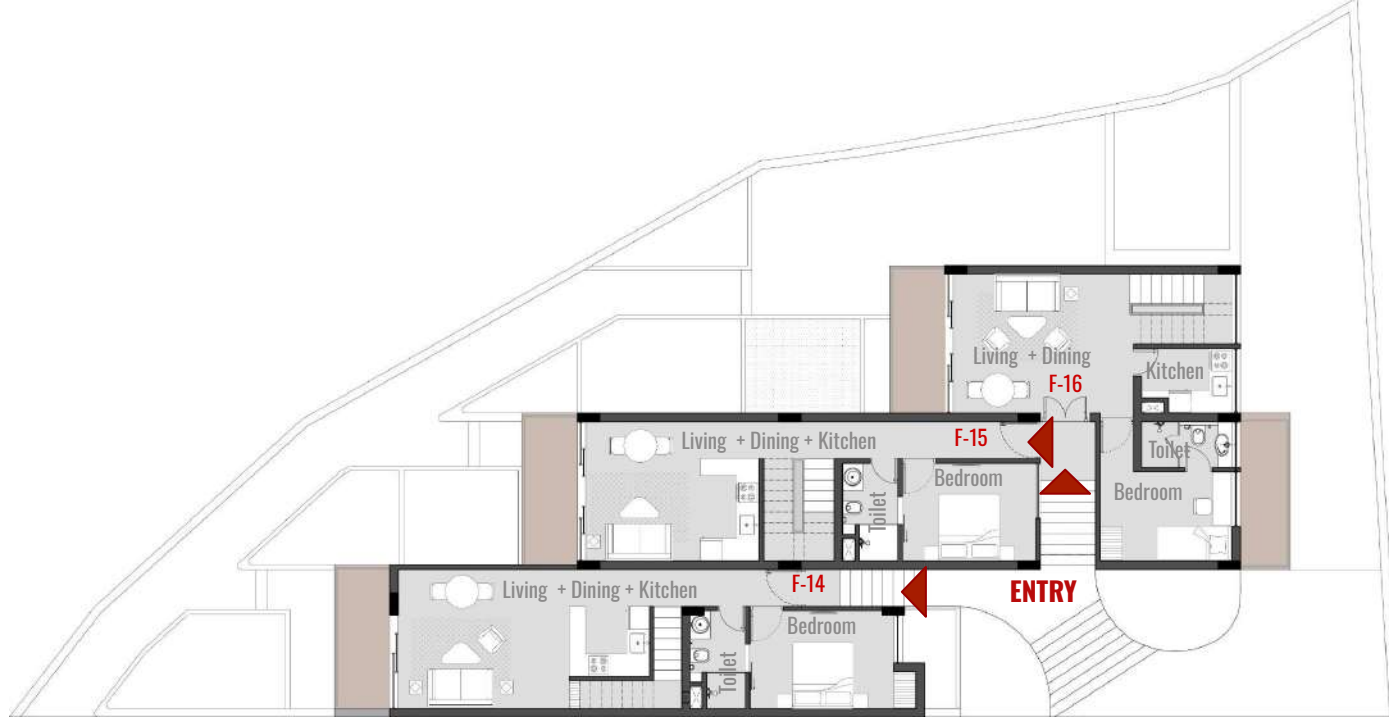
G-16

Living + Dining= 24'8" x 12'4"
 Toilet= 5' x 8'8"
 Bedroom= 12'1" x 12'4"
 Pool= 10'2" x 8'4"
 Kitchen= 8' x 6'

**1 BHK VILLA
 GROUND FLOOR (G-14 - G-16)**



KEY PLAN



KEY + AREAS :

F-14

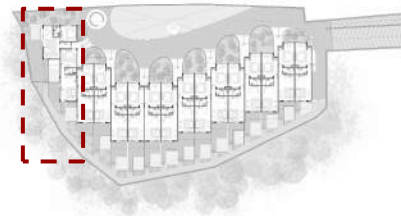
Living + Dining + Kitchen= 22'3" x 12'4"
 Toilet= 5' x 8'8"
 Bedroom= 12'9" x 8'8"

F-15

Living + Dining + Kitchen= 15'4" x 12'4"
 Toilet= 5' x 8'8"
 Bedroom= 11'10" x 8'8"

F-16

Living + Dining= 16' x 12'4"
 Toilet= 5' x 8'
 Bedroom= 12'1" x 7'
 Kitchen= 5'9" x 8'



KEY PLAN

**2 BHK VILLA (DUPLEX)
 FIRST FLOOR (F-14 - F-16)**



KEY + AREAS :

F-14

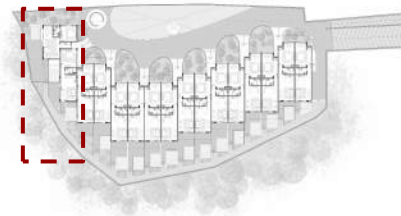
Lounge= 13' x 12'4"
 Toilet= 5' x 8'8"
 Bedroom= 13' x 12'4"
 Pool= 10'2" x 8'4"

F-15

Bedroom= 11'10" x 12'4"
 Toilet= 5' x 8'8"
 Pool= 10'2" x 8'4"

F-16

Bedroom= 11'1"8x 12'4"
 Toilet= 8' x 5'
 Pool= 10'2" x 8'4"



KEY PLAN

**2 BHK VILLA (DUPLEX)
 SECOND FLOOR (F-14 - F-16)**

3D VISUALIZATIONS



FRONT VIEW



VIEW



NIGHT VIEW



DUPLEX- POOL VIEW



1 BHK- ENTRY VIEW



BASEMENT- SUNKEN COURTYARD



REAR VIEW



NIGHT VIEW





FRONT VILLA VIEW- SUNSET

ALL OUR FITTINGS & APPLIANCES ARE FROM TOP INTERNATIONAL BRANDS, AND INDUSTRY LEADERS. THE FOLLOWING MENTIONED BRANDS ARE SUBJECT TO CHANGE TO BRANDS OF EQUIVALENT RENOWN & QUALITY.



KITCHEN

MODULAR KITCHEN
IFB/KAFF HOBB AND CHIMNEY
MODULAR SINKS



EXTERIOR

PAVERS/COBBLE STONES FOR OUTDOOR AREA
EXTERNAL PAINT IN IPS FINISH
LANDSCAPING WITH PLANTERS
LATERITE BRICK BOUNDARY WALLS



ELECTRICAL

DAIKIN OR EQUIVALENT AIRCONDITIONERS
HAVELLS/POLYCAB/SCHNEIDER ELECTRICAL
HAVELLS/SCHNEIDER SWITCHES



DOORS/WINDOWS/STAIRCASE

VITRIFIED AND DESIGNER TILES
MAIN DOOR IN TEAK WOOD
WINDOWS IN UPVC OR ALUMINIUM
SLIDING DOORS IN UPVC OR ALUMINIUM
STAIRCASE RAILING IN SOLID WOOD OR STEEL



BATHROOMS

JAQUAR/ARTIZE/KOHLER/GROHE FITTINGS
DESIGNER TILES AND EQUIVALENT
SHOWER ENCLOSURE
LOOKING MIRROR
HAVELLS WATER HEATER OR EQUIVALENT



ROOMS

VETRIFIED AND DESIGNER TILES
LIGHT FIXTURES
WARDROBES



STRUCTURE

WATERPROOFING OVER CONCRETE ROOF
EXTERNAL BLOCKS IN BRICK WORK
INTERNAL WALLS IN BRICK WORK
HIGH PLINTH LEVEL WITH DAMP PROOFING BELOW GROUND FLOOR



DIWA
— HOMES —